

Customer :

customer

Customer part :

customer part

Comment :

Comment

S1=0.04

S2=0.22

Tmax=468

Tp S2=507.0

PI=0.14

HI=36

Sample =8750.7

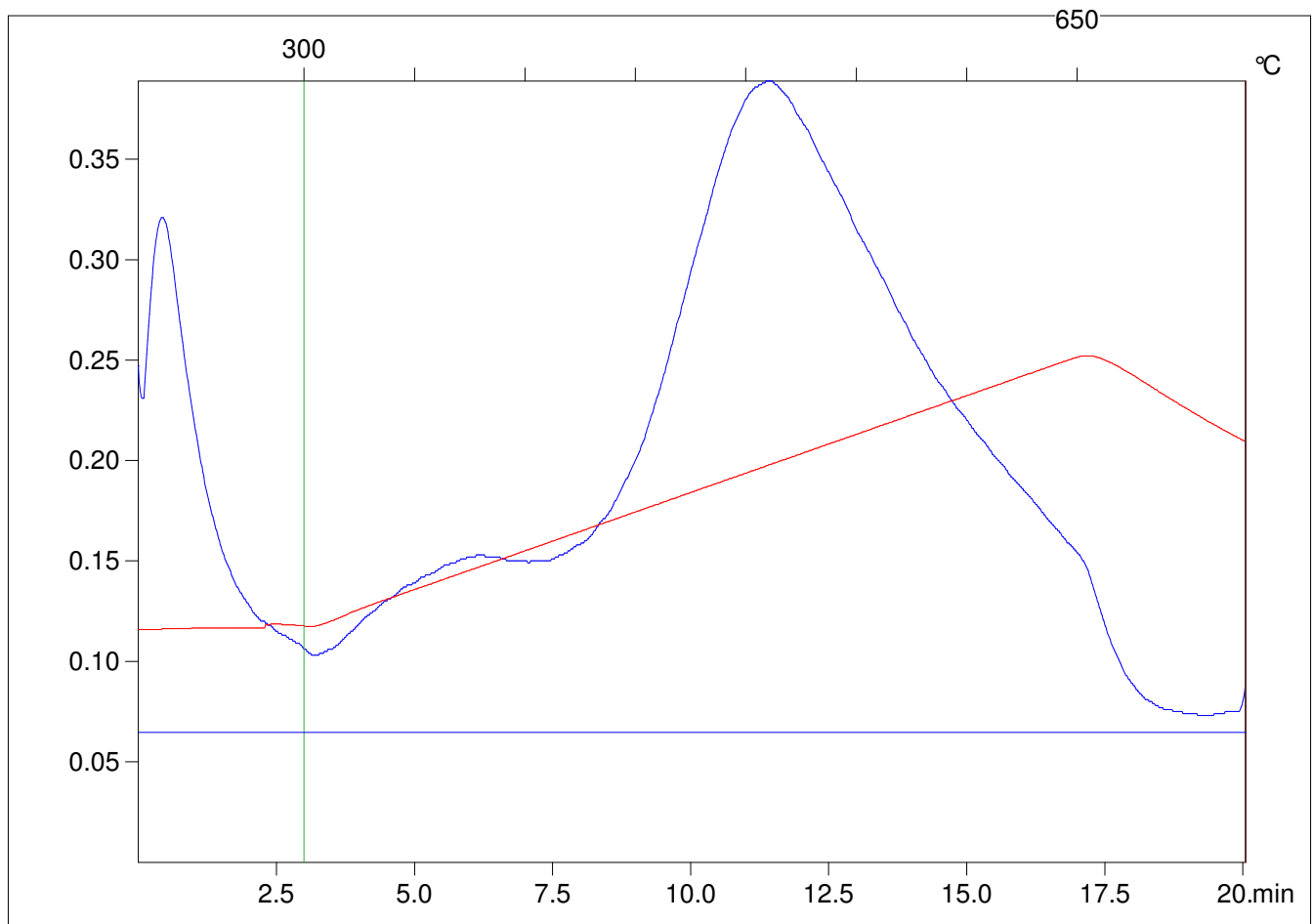
Method =Bulk Rock

Cycle=Basic

KFID(10*9)=1167

Qty =70.4

TOC=0.61



C:\VINC\PK141015\PK098.R00 : FID pyrolysis graphic

State

Pyro Status

Oxi Status